

THE NEED FOR AN EDUCATION-FIRST POLICY

PLM AS A MODEL FOR BRINGING
QUALITY EDUCATION TO THE
FILIPINO POOR

By: Atty. Adel Tamano

EDUCATION AS PRIORITY ONE

Art. XIV, Sec. 5 of the Constitution is categorical when it declares that “(t)he State shall assign the highest budgetary priority to education...”

Question – Does the state prioritize education? If it did, then why do we have students like Jasmine?

Education is not truly given Budgetary Priority

- Education is given only 16% of the National Budget
- The “highest budgetary priority” of the current budget is not education but debt-servicing at 56%

Asian Neighbors Outspending Us In Education

- A former Undersecretary of Education puts this issue of budgetary prioritization in a clearer perspective when he wrote that “(w)e talk about education getting the largest share of our national budget. In truth, the real measure is how much we spend annually per child — which is around \$150 . . . Thailand spends more than six times as much at \$950; Malaysia (spends) 10 times more.”

This is why -

- In the realm of Math and Science, in an examination taken by high-school students from 45 countries, ranking from the highest to the lowest, our country ranked **41st in Math** and **42nd in Science**.
- We have a **shortage of 45,000 Classrooms**
- In the Philippines, of ten school age students, only six will graduate from the primary level. Of the six, only four will graduate from high school. **Out of these four, only two will complete their college education**

To Address our Educational Crisis, we advocate -

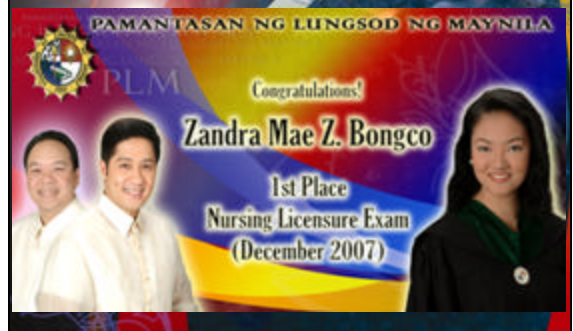
- A reorientation of our budget towards education
- On the tertiary level, establish more local colleges and universities to provide quality education to the poor
- PLM to serve as a model for a well-run local college/university

Fast Facts About PLM

- PLM has been in operation for more than forty years and is funded by the City of Manila.
- A high-quality, tuition-free tertiary institution
- Only top students – no grade lower than 80 and in the top 30 percentile of the PLMAT exams. About 10% of PLM students are salutatorians or valedictorians
- PLM is cited by the CHED as having centers of excellence
- PLM consistently rates among the top schools in licensure exams specifically in Nursing, Medicine, Engineering, and Law
- Industry respect for PLM graduates

Recognition of Student Achievers

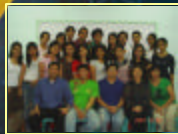
Proving that PLM is truly the Pamantasan ng Lahiing Magagaling our students continue to bring pride and honor to the University.



Recognition of Student Achievers

Proving that PLM is truly the Pamantasan ng Lahiing Magagaling our students continue to bring pride and honor to the University.

PLM was ranked 3rd in the Mechanical Engineering Licensure Exam.



Mr. Erickson Quijano (5th placer) and the 46 CPA Board Passers



Ms. MageWagan (BPE I) won 6 gold medals in the Rhythmic Gymnastics event of the Philippine Olympic Festival

PLM – Then and Now

PLM Before

- Poor facilities
- Culture of corruption
- No internet access for students
- Demoralized Workforce
- Students afraid of administration
- Students used for partisan political activities – forced to attend rallies

PLM Now

- Upgraded facilities
- Zero tolerance for corruption
- Free internet access and laser printing for students and faculty
- Employee benefits and academic freedom
- Protection of student rights and respect for campus journalism
- Students are free to join or NOT JOIN political activities

MAJOR ADMINISTRATIVE IMPROVEMENTS

- Reconstitution of Bids and Award Committee and adherence to procedure under the new procurement act – insures against “tong-pats”
- Appointment of Deans with fixed terms to engender academic freedom and as a confidence building measure

MAJOR ADMINISTRATIVE IMPROVEMENTS

- Drastically lowering expenses of Office of the President – No more credit card expenses paid by the University of 250,000-300,000 Pesos per month
- Collaborative, collegial and consensus building decision-making instead of a dictatorial approach to policy-formulation and decision-making
- Focus on giving wage and non-wage benefits to PLM employees – Free transportation service and medical benefits

Celso Al Carunungan Memorial Library

BEFORE



NOW



FREE Internet Stations

Now, students can do electronic research at the library using FREE online resources. Internet computer stations are now available at the Main Library, at the Medicine Library, and the Graduate School Library. We have 37 free internet computers throughout the university



Book Acquisitions



This Administration actively involves the Faculty in the Selection Process. It is our goal to equip our library and boost our book collections to be at par with leading academic libraries in the country.

Enhancement of the PLM Faculty-Complement



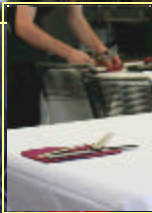
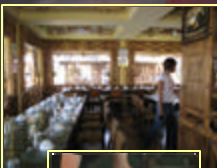
Dr. Alberto C. Romualdez, former Secretary of Health, will be joining the faculty of PLM and is a nominee of the President for Deanship of the Graduate School of Health Sciences.

The College of Law under the leadership of Dean Ernesto P. Maceda Jr. have likewise attracted the following high profile legal personalities:

- Sen. Ernesto M. Maceda (Legislation and Public Governance)
- Justice Oswaldo Agcaolili (Constitutional Law)
- Atty. Abelardo Domondon (Commercial Law)
- Atty. Victorino Mamalateo (Tax Law)
- Atty. Katrina Legarda (Family Law)
- Atty. Howard Calleja (Election Law)

They are among the new faculty members who have agreed to teach at PLM, joining the existing group of practicing judges, labor arbiters, prosecutors and litigators who compose the teaching staff of the College of Law.

University Cafe



The College of Tourism, Hotel and Travel Industry Management has the ability and the capacity to run a financially viable learning laboratory at the least operating cost.

The café will serve as a showcase to get private sectors interested and help the University in its bid to acquire Hotel Intramuros.

The PLM Shuttle Service [continued..]

PLM SHUTTLE SERVICE ROUTES

BUS 1		
	Route From PLM	Route Back to PLM
Route 1	P. Burgos Finance Road Taft Avenue Baclaran	F.B. Harrison Mabini St.
BUS 2		
	Route From PLM	Route Back to PLM
Route 2	P. Burgos Manila City Hall Park N Ride Lawson Quezon Blvd España	Welcome Rotonda España Blumentritt Avenida/Rizal



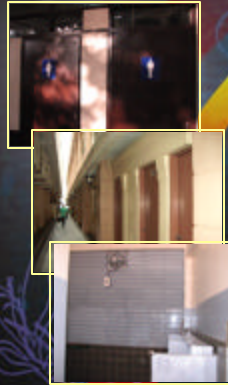
Since its test run in September 17, the PLM Shuttle Service has provided transport to an average of 75 employees daily.

Refurbishment of the Mabuhay Integrated Learning Center



The MILC is an extension service catering to the little children of PLM employees. It was given a face-lift after an air conditioning unit was installed in the facility to make the day care center more conducive for learning. A Television and VCR player will also be installed to facilitate a more innovative method of learning.

Renovation of Comfort Rooms



The comfort rooms at the ground floor of Gusaling Villegas was renovated and equipped with an exhaust fan, as part of the administration's campaign to engender more hygienic comfort rooms.

The improvement of the comfort rooms are presently being carried out in the entire University.

Renovation of Gymnasium



The Raja Sulayman Gym was renovated to become a state-of-the-art gymnasium.

Additional Classrooms



Newly-improved Facade



-Working with Government agencies to provide affordable graduate and undergraduate education straight to their door step

List of Government and Private Agencies with Successful Off-campus Programs

Government Agencies	Program
Armed Forces of the Philippines	MBA
Bureau of Solid and Water Management*	MGM
Central Police District	MGM
Commission on Audit*	MGM
Cooperative Development Authority	MBA
Crame (ITG, CIVISCOM, CSIG)	MGM
Department of Budget and Management	MGM
Department of Education, Culture and Sports*	MGM
Department of Interior/Local Government	MGM
Department of Justice	MGM
Department of Labor and Employment*	MGM
Department of Trade and Industry	MGM
Land Management Bureau	MGM
Land Transportation Office	MGM
Local Government Unit (Mayors)	MGM
Manila City Hall*	MGM
National Food Authority	MBA
Philippine Crop Insurance Corporation	MBA
Philippine Overseas and Employment Association	MGM
Philippine Ports Authority*	MGM/MBA
Philippine Tourism Authority	MGM
Quinson City Hall	MGM
Social Security System*	MGM
Western Police Traffic Enforcement Office	MGM
Western Police District*	MGM
Private Institutions	
Far East Guaranty Insurance Corporation	MBA
Philippine Deposit Insurance and Corporation	MBA
Philippine Long Distance Telephone Company	MBA

Additional Benchmarks

- Transfer of Avancena faculty and students to PLM
 - A savings of 6,000,000 pesos a year
- Removal of waste materials accumulated over the years
- Established a PLM website
www.thepamantasan.com
- Re-established ties with Alumni
- Establishment of PLM Entrepreneurial Center

FUTURE INITIATIVES

- Re-orienting PLM to focus on bringing quality-education to the poor and marginalized
- PLM big brother – PLMAT Review
- Pilot Class for janitorial and security staff
- Genuine Faculty Development Programs
- Empowering environment for students and employees thru facilities upgrade

CONCLUSION

- PLM can serve as a model where with sufficient support, local colleges and universities can succeed in its mission of bringing high-quality, tuition-free or low cost education to the poor and marginalized
- With enough PLMs or local colleges and universities, there will be less Jasmines and more educated and qualified graduates ready to contribute to our economy by working here or abroad.